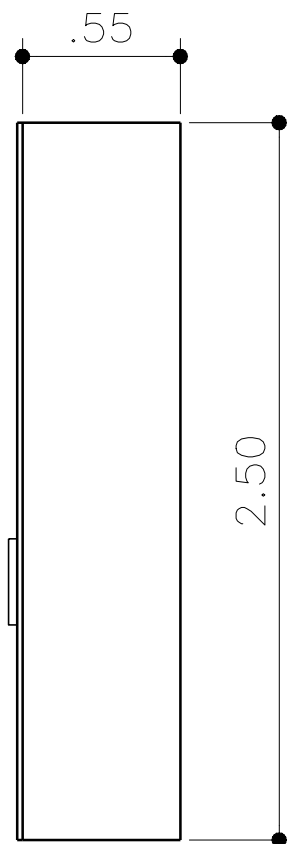
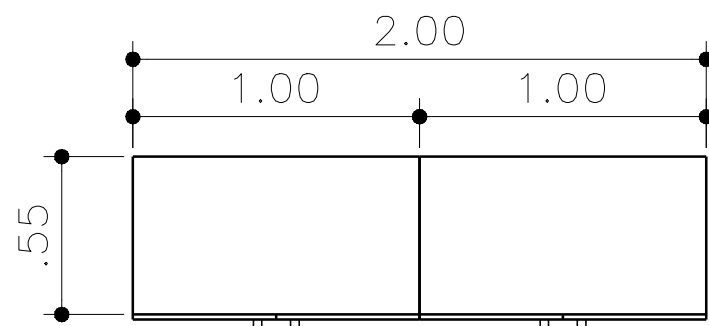


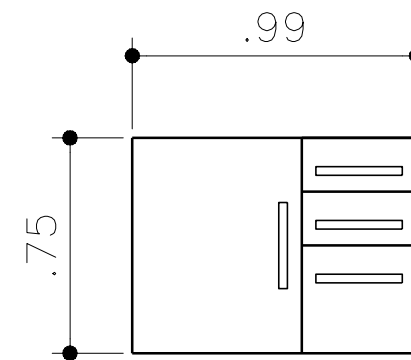
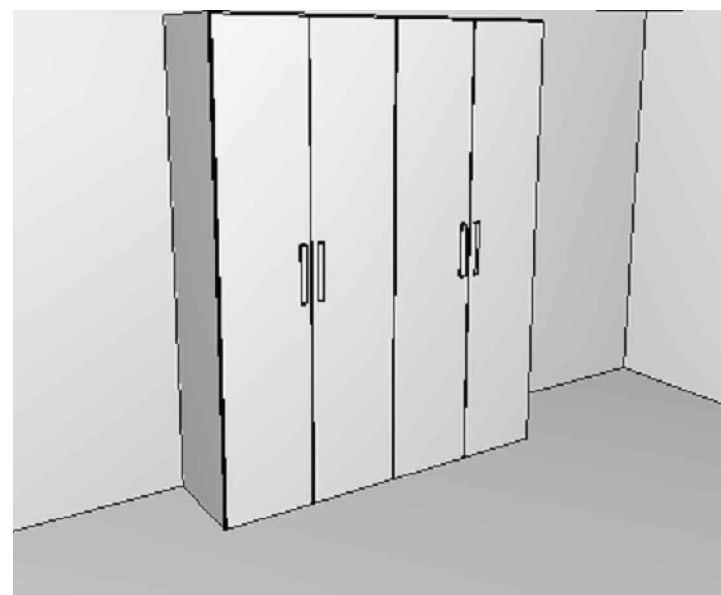
VISTA FRONTAL
1:25



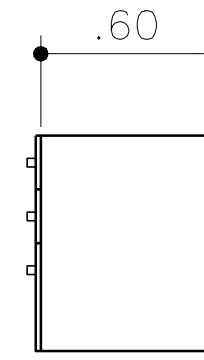
VISTA LATERAL
1:25



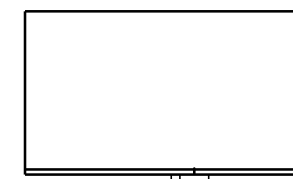
PLANTA BAIXA
1:25



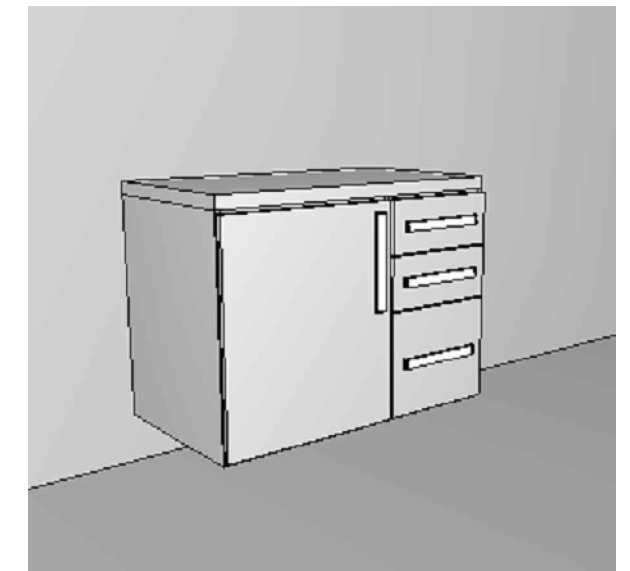
VISTA FRONTAL
1:25



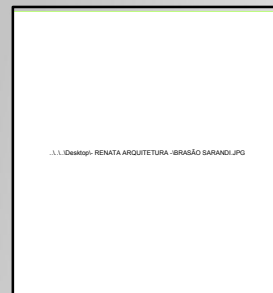
VISTA LATERAL
1:25



PLANTA BAIXA
1:25



DIREITOS AUTORAIS RESERVADOS. LEI 9.610 DE 19.02.98.



PREFEITURA MUNICIPAL DE SARANDI

Palácio Municipal Dr. Mário Azambuja
PRAÇA GETÚLIO VARGAS S/N-SARANDI-RS

projeto: **EMEI BALÃO MÁGICO**

data: **JAN/2016**

Proprietário:
PREFEITURA MUNICIPAL DE SARANDI
Paulo Rodolfo Viccari Kasper - Prefeito Municipal

Responsável Técnico:
RENATA CRISTINA CASTOLDI
Arquiteta e Urbanista
CAU/RS A70045-2

área:
-

esc: **INDICADA**

projeto: **TROCADOR E ARMÁRIO LAVANDERIA**

pranchas: **01**