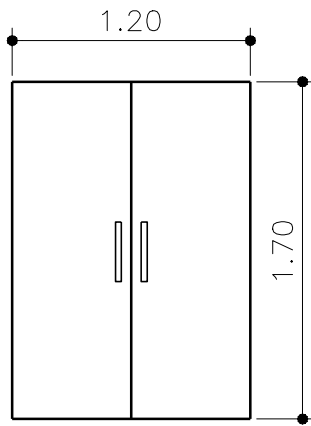
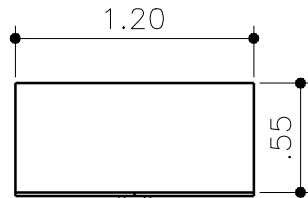


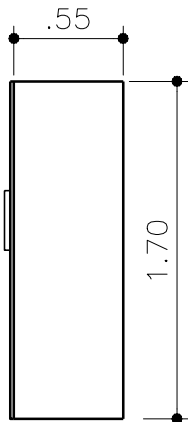
ARMÁRIO 01



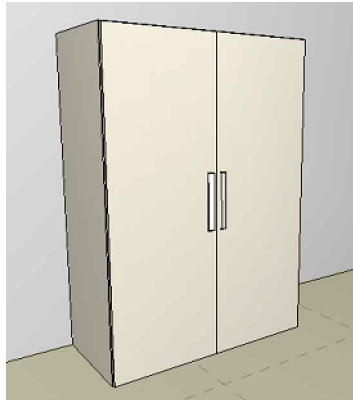
VISTA FRONTAL
1:25



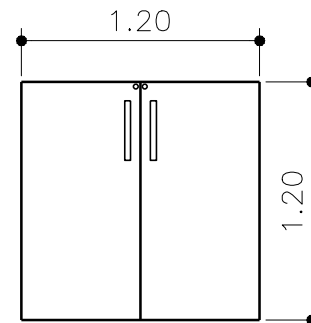
PLANTA BAIXA
1:25



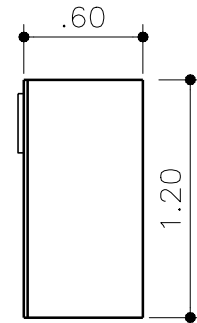
VISTA LATERAL
1:25



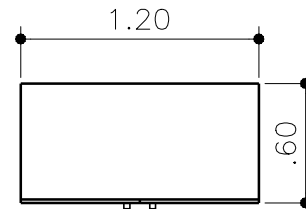
ARMÁRIO 02



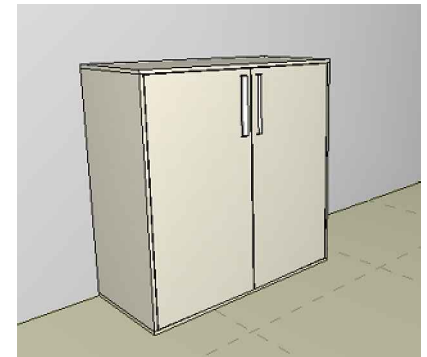
VISTA FRONTAL
1:25



VISTA LATERAL
1:25



PLANTA BAIXA
1:25



DIREITOS AUTORAIS RESERVADOS. LEI 9.610 DE 19.02.98.



PREFEITURA MUNICIPAL DE SARANDI

Palácio Municipal Dr. Mário Azambuja
PRAÇA GETÚLIO VARGAS S/N-SARANDI-RS

projeto: MOBILIA SECRETARIA ESCOLA MILTON ALVEZ DE SOUZA	data: ABR/2015
Proprietário: PREFEITURA MUNICIPAL DE SARANDI Paulo Rodolfo Viccari Kasper - Prefeito Municipal	Responsável Técnico: RENATA CRISTINA CASTOLDI Arquiteta e Urbanista CAU/RS A70045-2
projeto: ARMÁRIO 01 E 02 - RECEPÇÃO	esc: INDICADA
	pranchas: 03