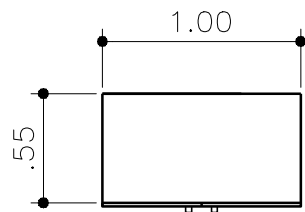
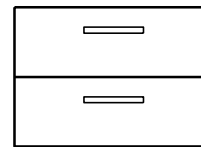
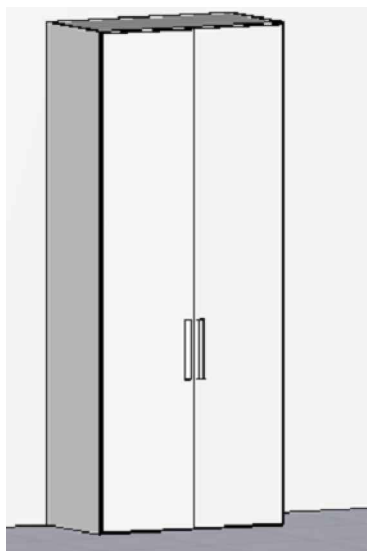


VISTA FRONTAL
1:25

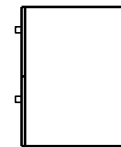
VISTA LATERAL
1:25



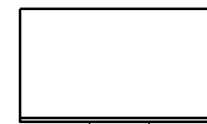
PLANTA BAIXA
1:25



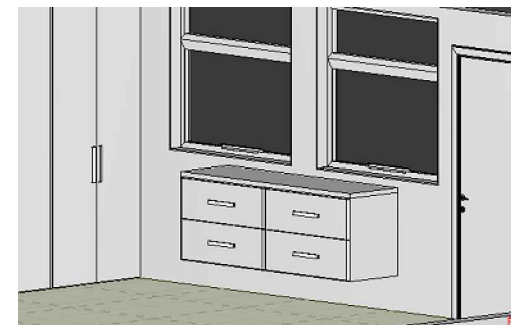
VISTA FRONTAL
1:25



VISTA LATERAL
1:25



PLANTA BAIXA
1:25



DIREITOS AUTORAIS RESERVADOS. LEI 9.610 DE 19.02.98.



PREFEITURA MUNICIPAL DE SARANDI

Palácio Municipal Dr. Mário Azambuja
PRAÇA GETÚLIO VARGAS S/N-SARANDI-RS

projeto: EMEI VÓ ADELIA	data: JAN/2016
Proprietário: PREFEITURA MUNICIPAL DE SARANDI Paulo Rodolfo Viccari Kasper - Prefeito Municipal	Responsável Técnico: RENATA CRISTINA CASTOLDI Arquiteta e Urbanista CAU/RS A70045-2
projeto: ALMOXARIFADO	pranchas: 02
	esc: INDICADA