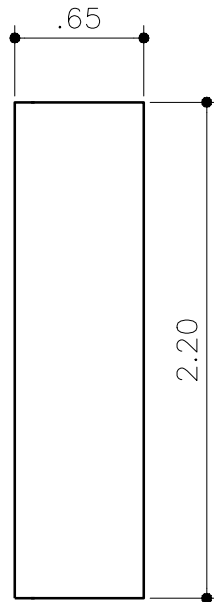
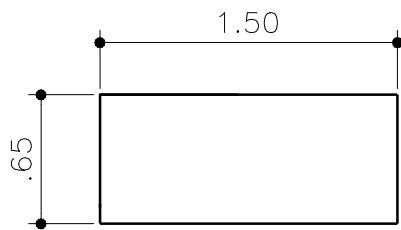


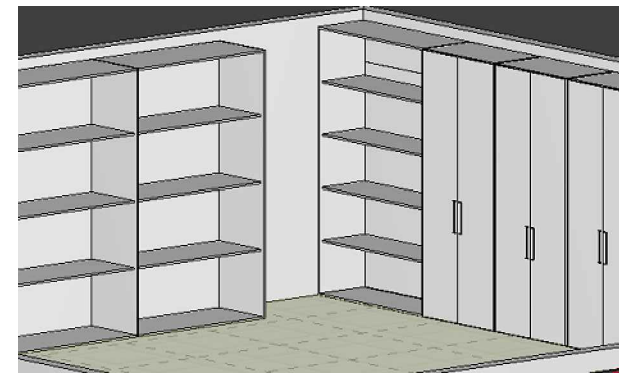
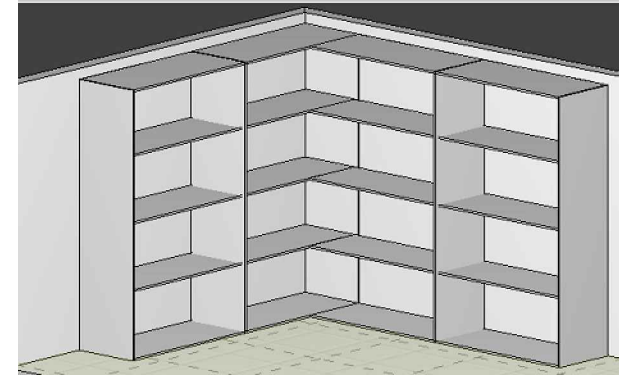
VISTA FRONTAL
1:25



VISTA LATERAL
1:25



PLANTA BAIXA
1:25



DIREITOS AUTORAIS RESERVADOS. LEI 9.610 DE 19.02.98.



PREFEITURA MUNICIPAL DE SARANDI

Palácio Municipal Dr. Mário Azambuja
PRAÇA GETÚLIO VARGAS S/N-SARANDI-RS

projeto:	EMEI VÓ ADELIA	data:	JAN/2016
Proprietário:	PREFEITURA MUNICIPAL DE SARANDI Paulo Rodolfo Viccari Kasper - Prefeito Municipal	Responsável Técnico:	RENATA CRISTINA CASTOLDI Arquiteta e Urbanista CAU/RS A70045-2
projeto:	ALMOXARIFADO	esc:	INDICADA
		pranchas:	03